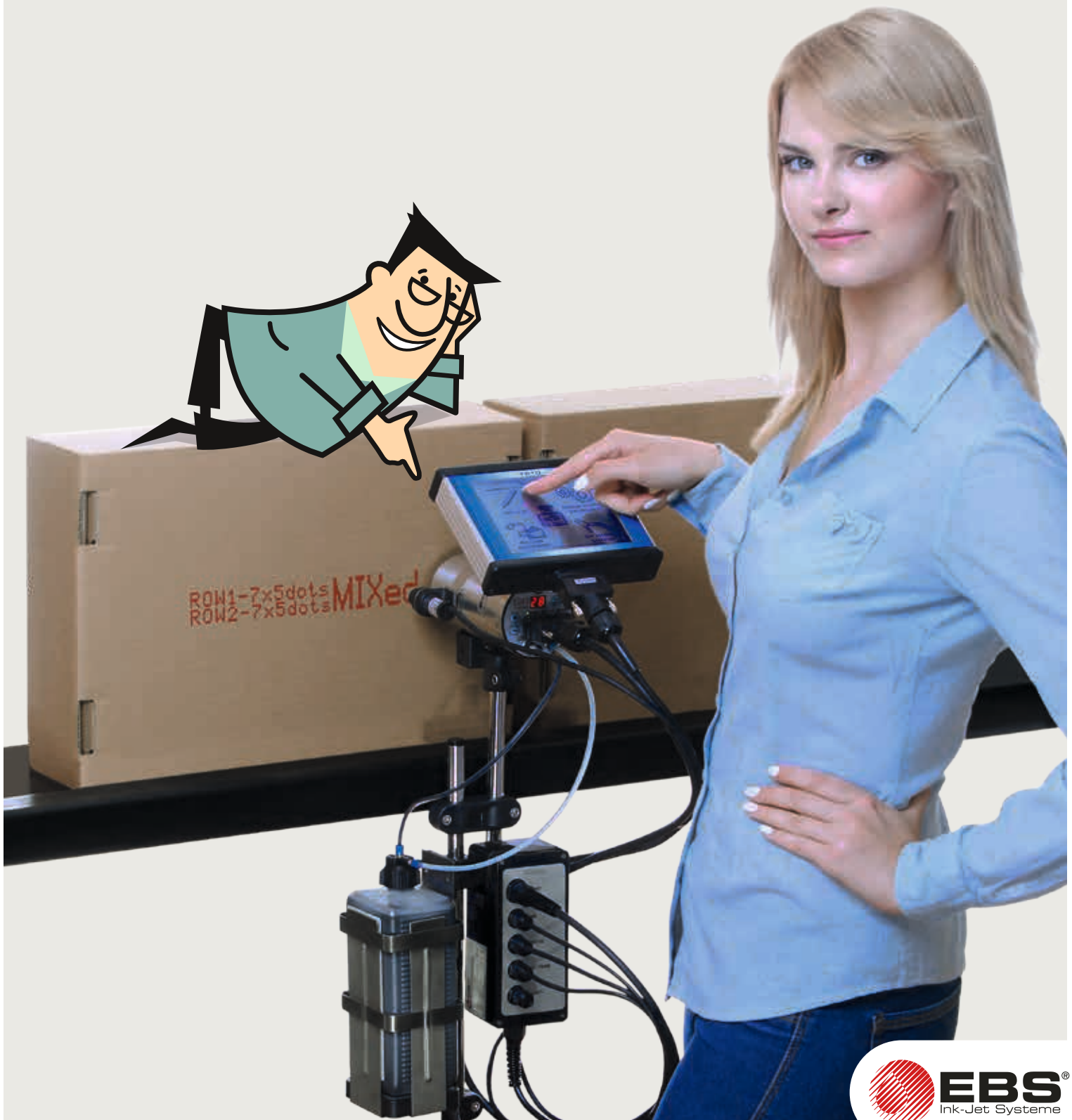


EBS | Innovation since 1977

PICAS EBS-230

SMALL BUT POWERFUL

COST-SAVING AND ROBUST INK JET PRINTER





Easy. Simple. Printing.

2-line coding has never been so easy

Multiple colors, pigmented, UV viewable security, fast drying, food grade, heat resistant, environmental friendly are just a selection of inks.

Suitable for printing on porous and non-porous surfaces.



Introducing one of the most compact and versatile DoD printers in the world.

149 mm length – fully equipped.

PicAS EBS-230 incorporates all state-of-the-art functions a modern Drop-on-Demand (DoD) printer must have. In its ultra compact stainless steel enclosure everything you'll need for a perfect printout is included: Print engine, air compressor, air filter, ink filter, interfaces, logic board with CPU and memory and software.

IP 54 protected.

Best of its class enclosure of printhead, junction box with power supply, bottle reader and touch screen terminal. All water and dust protected.

Applications



→ Plastic profile



→ Carpet



→ Steel



→ Gas concrete



→ Window profile



→ Plastic pipe



→ Brick



→ Glass



→ Cable spool



→ Paper bag



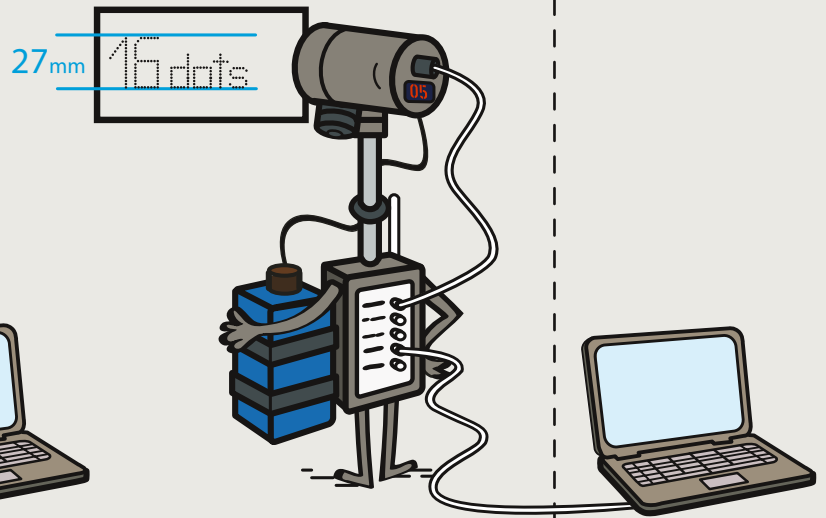
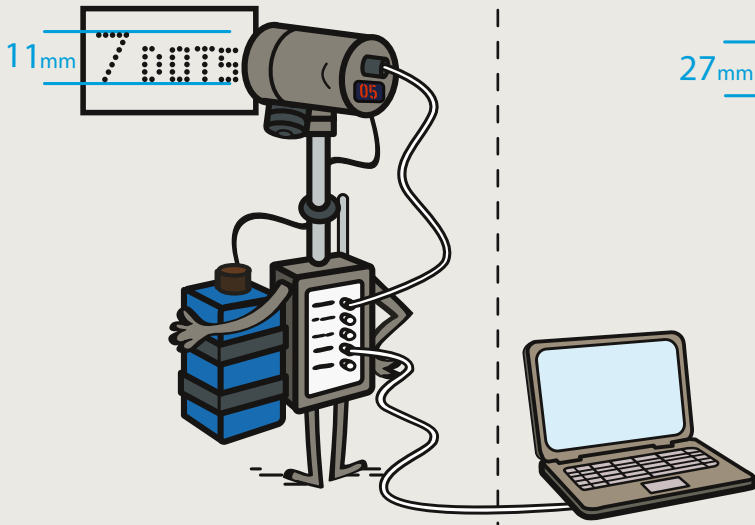
→ Sponge rubber



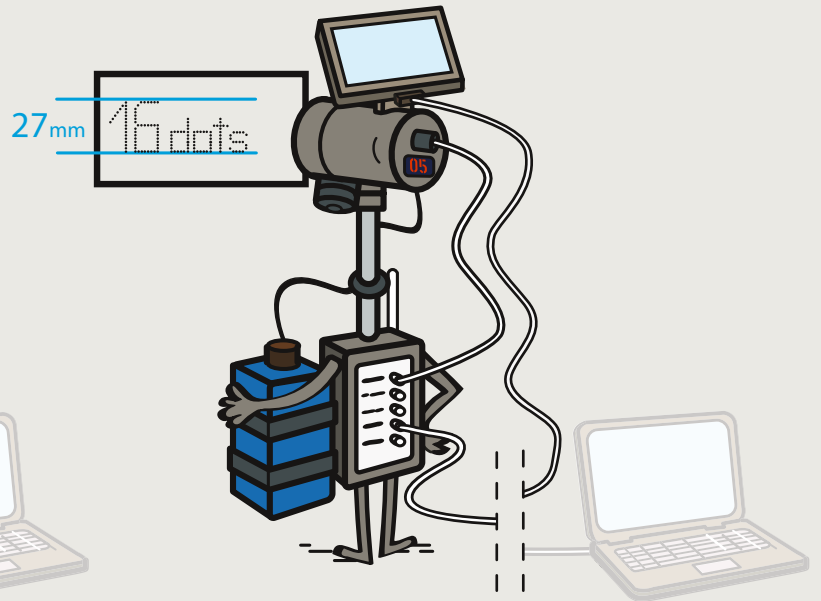
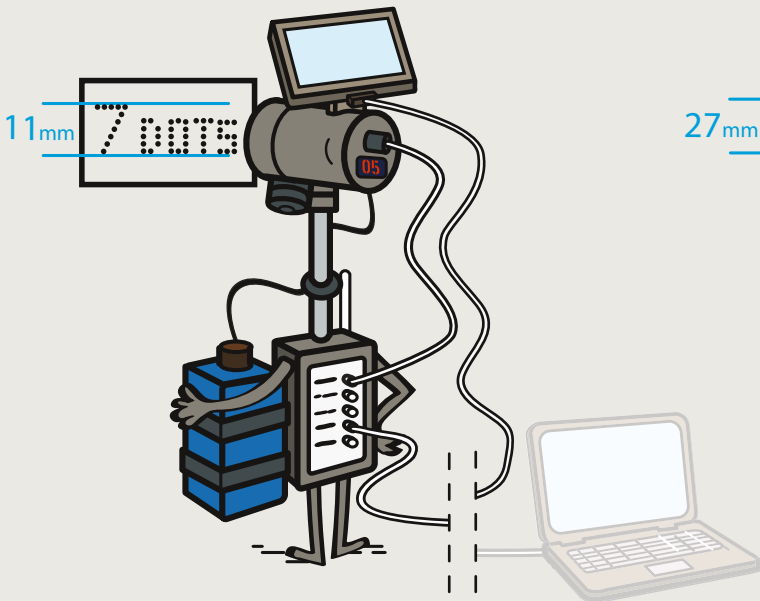
→ Fruit box

Configurations

no touchscreen

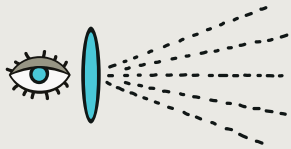
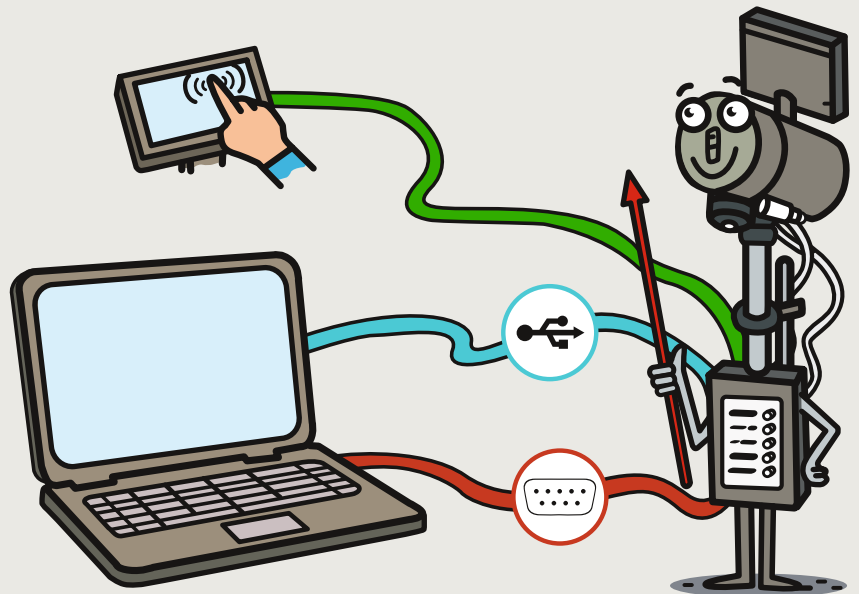


with touchscreen

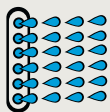


Technology advancing

Interface can handle either USB connection to PC or touchscreen terminal or Bluetooth connection to PC or RS-232 for data input.



One product sensor included (photocell)



Purge function



Slant head technology – prints from 5-27 mm height



Ruby nozzle design for low ink consumption



Best in class cost per code
(down to 0,04 μ l/dot \approx 25.000.000 dots/liter
 \approx 2.000.000 characters @7x5 matrix/1L)

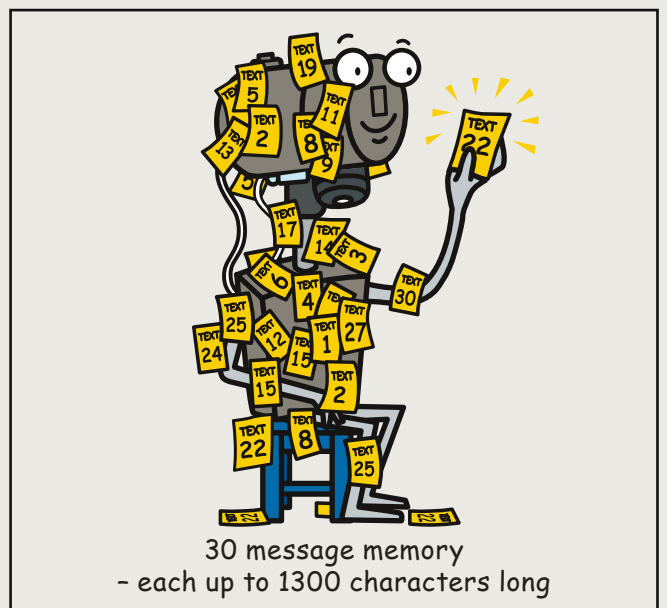
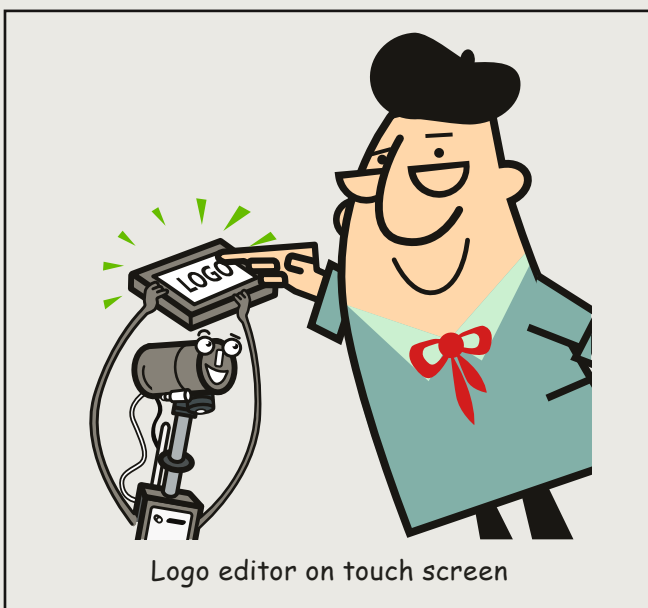
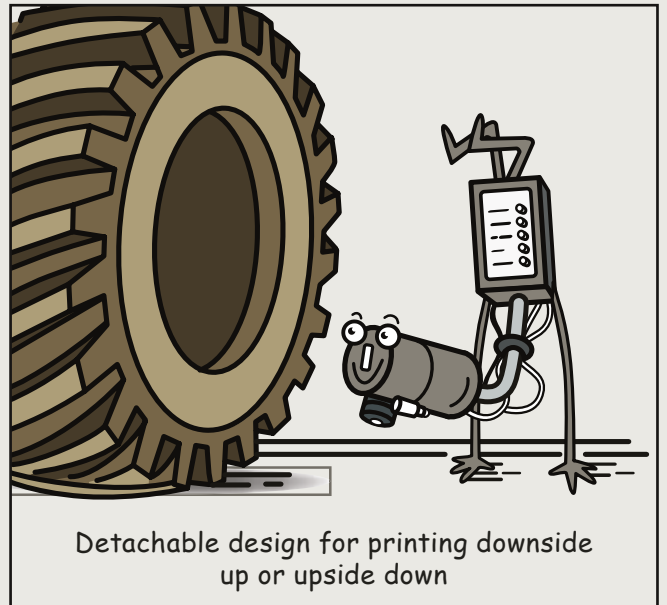
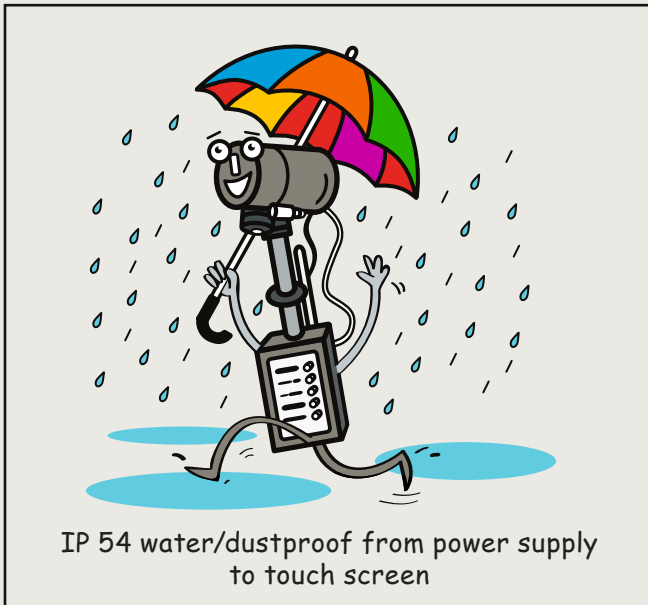
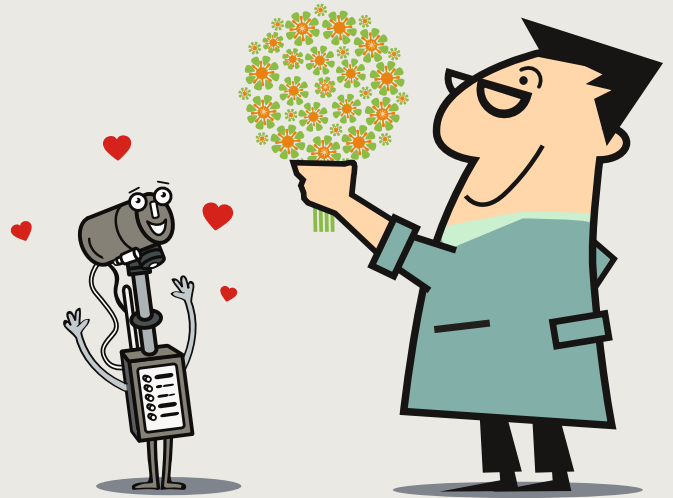


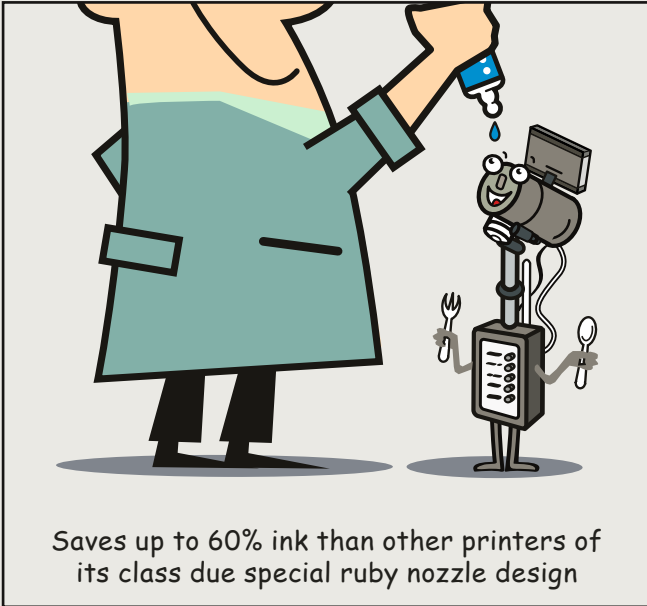
Optional Touch Screen



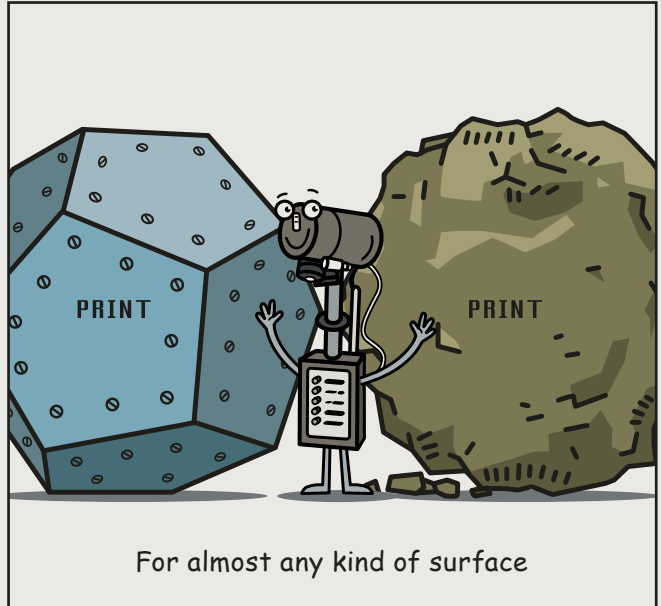
All in one box – ready to start

Why we love EBS-230?

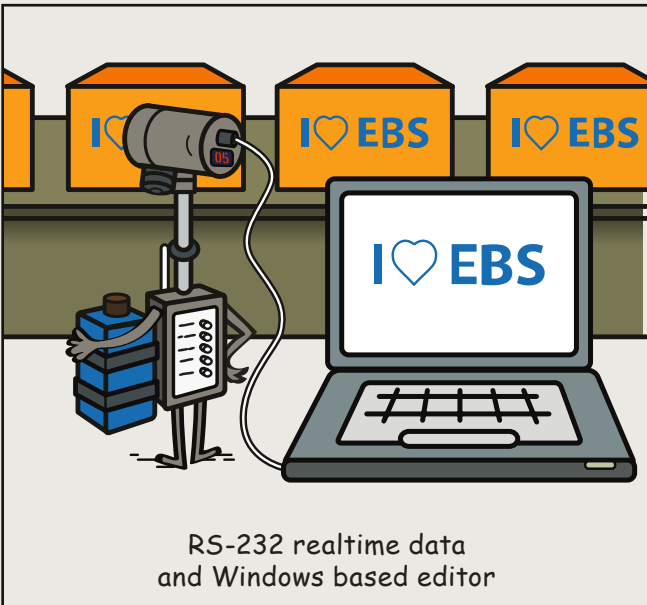




Saves up to 60% ink than other printers of its class due special ruby nozzle design



For almost any kind of surface



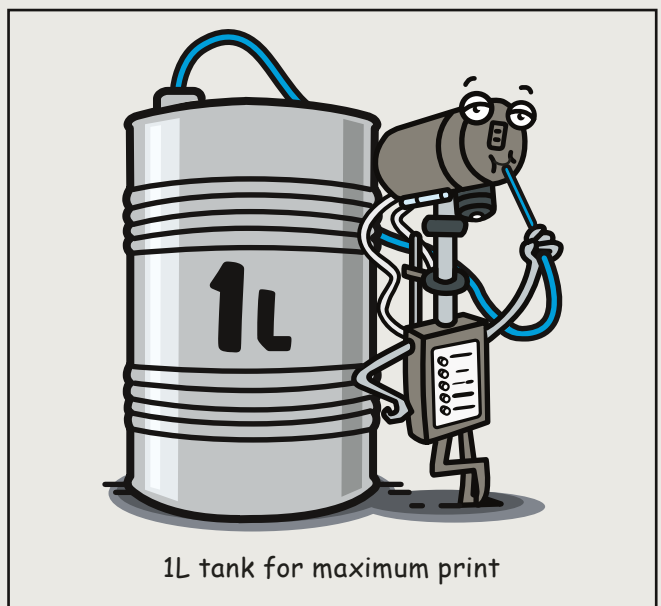
RS-232 realtime data and Windows based editor



Stainless steel design



Up to 2 years warranty



1L tank for maximum print

Shipped.

Standard package.

- Transport box
- Printer EBS-230
- Spray bottle (empty)
- Power supply with junction box
- CD-ROM with user software and manual
- Ink system for 1L bottle
- Simple stand for conveyer
- USB cable (PC - EBS-230)
- Optional: touchscreen terminal



For every purpose the right ink¹.

Different surfaces, different areas of operation, different inks:
printing on concrete requires e.g. different ink as foodgrade ink. Dark backgrounds require lighter pigmented inks, particularly smooth surfaces require especially quick-drying, adhesive colour.

Inked.

Water · Ethanol · Acetone · MEK



ETHANOL BLUE

Universal ink for almost all surfaces, good contrast on light backgrounds/substrates



ACETONE BLACK

Universal ink for almost all surfaces, quick-drying, good contrast on light backgrounds/substrates



ETHANOL BROWN

Foodgrade ink for printing directly onto foodstuffs or printing of food packaging



ETHANOL BLACK

Universal ink for almost all surfaces, heat-proof up to 250°C for up to 40 sec.



WATER RED

for porous surfaces, slight migration (e.g. for wood marking)



ETHANOL RED

Foodgrade ink for printing on food packaging, good contrast



MEK YELLOW, PIGMENTED

Universal ink for almost all surfaces, quick-drying, good contrast on dark backgrounds/substrates



ACETONE WHITE, PIGMENTED

Universal ink for smooth surfaces, quick-drying, good contrast on dark backgrounds/substrates



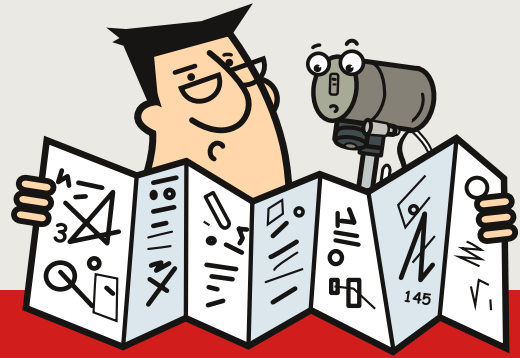
MEK BLUE, PIGMENTED

Universal ink for almost all surfaces, quick-drying, good contrast on dark backgrounds/substrates

... more inks upon request

¹ The relationship between ink-jet inks and substrates are subject to the laws of chemistry and physics – and naturally has limits. Please contact us for information regarding your specific application.

Specified.



Facts

Print height	6 - 11 mm with 7-nozzle printhead (single line printout) 6 - 27 mm with 16-nozzle printhead (single and dual line printout)
Nozzle diameter	150 µm
Printhead positioning	any
Memory	30 messages with 1.300 characters each
Print speed	600 vertical rows/sec. up to approx. 60 m/min.
Special characters	national and diacritical characters, graphical info-, warning- and transport characters
Special registers	date, time, expiry date, incremental and decremental counters, universal counter
Printer programming	software via USB (compatible with Windows® XP/Vista/7/8) or via terminal "T210"
Ink consumption	approx. 2.000.000 characters/Liter (with 7 x 5 matrix, @ 0,35 bar)
Emulation of Windows® Fonts	possible, reduced to vertical resolution of printhead
Speed encoder	internal impulse generator or optional external shaft encoder
RS-232	as an alternativ to USB - PC connection, an ASCII data stream can be sent into a pre-defined text space
Inks	based on water, ethanol, acetone or MEK in different colors - one ink, one PicAS
Scope of delivery	Printer, junction box with power supply, USB cable for PC to EBS-230, 1 L ink system, print-head holder, software and manual on CD
Power supply	100 - 240V spray water protected IP 54
Weight	< 1.600 g without bottle

Models

	EBS-230/7	EBS-230/7 T	EBS-230/16	EBS-230/16 T
Printmatrix up to 7 dots vertical	●	●		
16 dots vertical			●	●
Print height	5 x 5, 7 x 5 matrix or chimney font		5 x 5, 7 x 5, 12 x 7, 16 x 10 matrix or chimney font	
USB cable PC to EBS-230	●	●	●	●
Removable touchscreen terminal "T210"	○	●	○	●

● standard

○ optional

EBS | Innovation since 1977



Plant Nümbrecht - Germany

EBS | 43 Years of Competence and Innovation

Since 1977, EBS GmbH Germany has been a leader in industrial coding equipment. Our early development and pioneering innovations in ink-jet technology are still being used worldwide.

Today EBS has become an international producer and operates a family owned multinational business. We run branch offices and plants in Europe, USA and China and co-operate with numerous partner companies world wide.

More than 330 people develop and produce the range of EBS products in Germany and Poland. We continue to set global standards for quality, innovation, technological leadership and service.

Our high performance products can be found in more than 70 countries, with more than 200 distributors, dealers and OEM's.

We would like to welcome you as our new customer.

www.ebs-inkjet.de

Your Dealer

Resolution Inplant Services Inc.

1229 Advance Road, Unit 8
Burlington, ON L7M 1G7

www.resservices.ca
1-905-331-9339

Subject to technical changes.



PRODUCTION & DEVELOPMENT

HEADQUARTERS GERMANY

EBS Ink Jet Systeme GmbH
Alte Ziegelei 19-25
51588 Nümbrecht-Elsenroth
Deutschland
Tel: 0 22 93 / 93 9-0
Fax: 0 22 93 / 93 9-3
E-Mail: mail@ebs-inkjet.de
www.ebs-inkjet.de

POLAND

EBS Ink-Jet Systems Poland Sp.z o.o.
ul. Tarnogajska 13
50-512 Wroclaw (Breslau)
Polen
Tel: (+48) 71 36 70 411
Fax: (+48) 71 37 33 269
E-Mail: office@ebs-inkjet.pl
www.ebs-inkjet.pl

SALES, LOGISTICS & TECHNICAL SUPPORT

USA

EBS Ink-Jet Systems USA, Inc.
1840 Industrial Drive - Suite 200
Libertyville, IL 60048
USA
Tel: (001) 847 996 0739
Fax: (001) 847 996 0843
E-Mail: sales@ebs-inkjet.com
www.ebs-inkjet-usa.com

CHINA

EBS Ink-Jet Systems
(SHENZHEN) Co., Ltd.
Unit 608, Building Jin-Hui-Qiu No.5,
Langshan 2nd Road, Gaoxin bei qu,
Nanshan District
518057 Shenzhen China
Tel: (+86) 755 2340 0676
Fax: (+86) 755 2340 0376
E-Mail: office@ebs-china.com
www.ebs-inkjet-china.com

